

# Water is one of the most evocative and challenging elements in environmental design.

The interplay of water and architecture has intrigued designers and architects around the globe driving innovation and experimentation.

## UltimateStainless + Design

UltimateStainless provides superior solutions in a variety of applications, from aesthetic architectural designs, to hygienic plumbing and drainage applications.

UltimateStainless steel grate and trough systems are simple to select, specify and install, and represent the ultimate in bathroom aesthetic drainage solutions. They are ideal in wet rooms and large tiled areas allowing for simple one way falls and ease of design.

## Product support

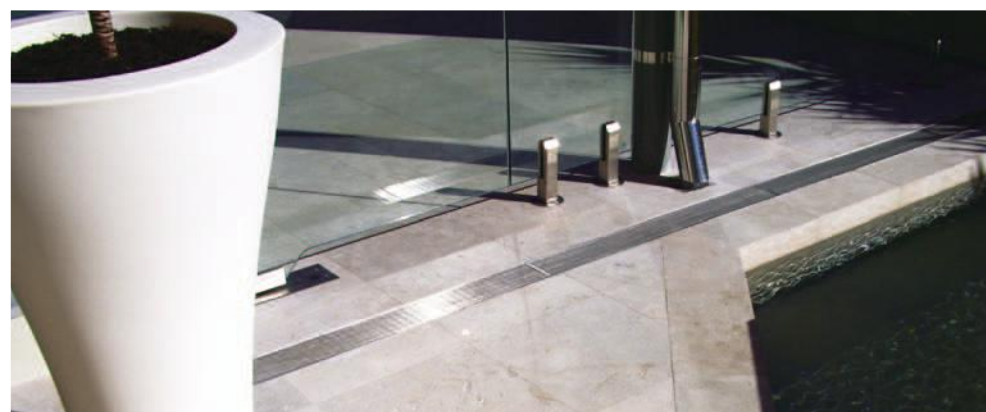
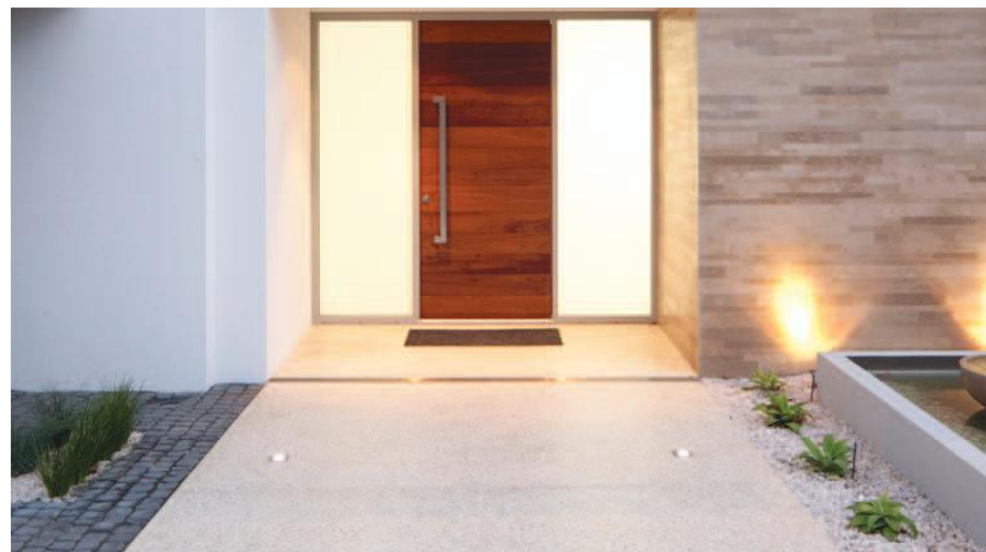
For assistance with your next UltimateStainless project, call Civil & General Distributors for prompt and professional advice from Western Australia's largest supplier of surface drainage products.

**Phone (08) 9249 4733**

27 Oxleigh Drive Malaga WA 6090

[www.civilandgeneral.com.au](http://www.civilandgeneral.com.au)

**CIVIL & GENERAL**  
DISTRIBUTORS







UltimateStainless  
Shallow Trough & Grate

UltimateStainless  
Tile Insert

Combining architecture and the flexibility of UltimateStainless offers inspirational design with low maintenance living.

Our products can be installed in residential or commercial environments and can be applied to a variety of design solutions including:

- Bathrooms
- Balconies
- Pool areas
- Alfresco
- Water features
- Driveways

Custom fabrication

Civil & General Distributors delights in providing custom solutions for your individual project. Whether it's straight, circular, narrow, or wide specifications give us a call to see how our custom fabrication services can help you achieve an exclusive finish for your next unique project.

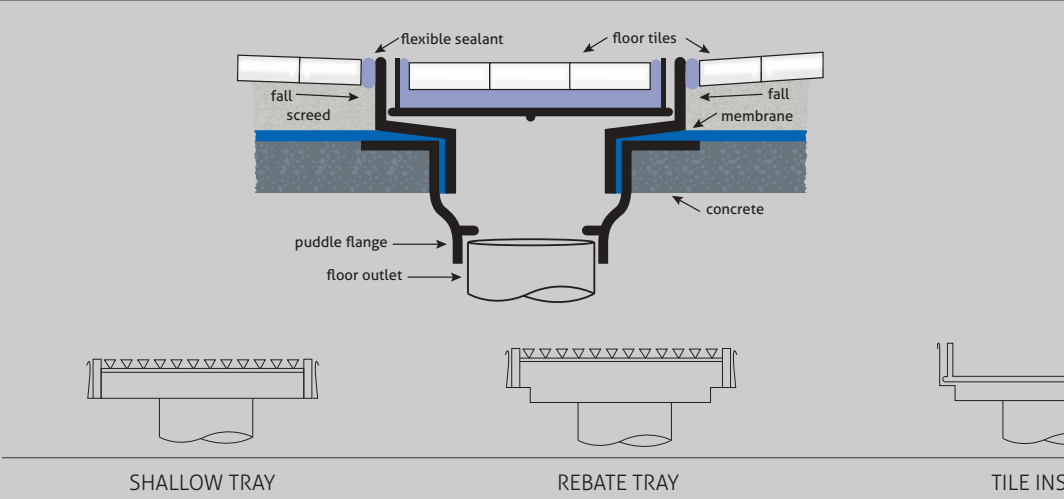
CIVIL & GENERAL  
DISTRIBUTORS



Recommended installation practices

- Inspect the product for any signs of damage prior to installation.
- Always check with your local authority for their specific waterproofing and installation requirements. Waterproof and install to your local authority requirements.
- Ensure all components to complete the project are on site prior to installation. Before installation lay out all components along channel run to ensure all pieces are on site.
- It is recommended the grate or tile insert tray be in situ during installation. If the grate is removed use a suitable spreader to prevent the tray from flexing inwards.
- The tray should be cast into a suitable slurry bed or flexible sealant with no air pockets under the tray.
- It is advised that the grate and trough be cleaned periodically.
- Use a wire hook to remove the grate from the trough for cleaning.

TILE INSERT INSTALLATION GUIDE



GRATE AND TROUGH INSTALLATION GUIDE

