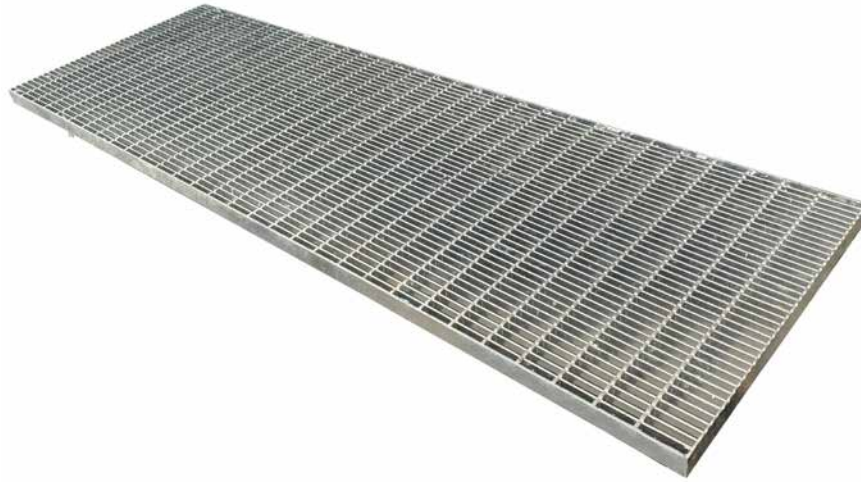


## 323mm Galvanised Steel Heelguard Grate - Class D CLIPFIX



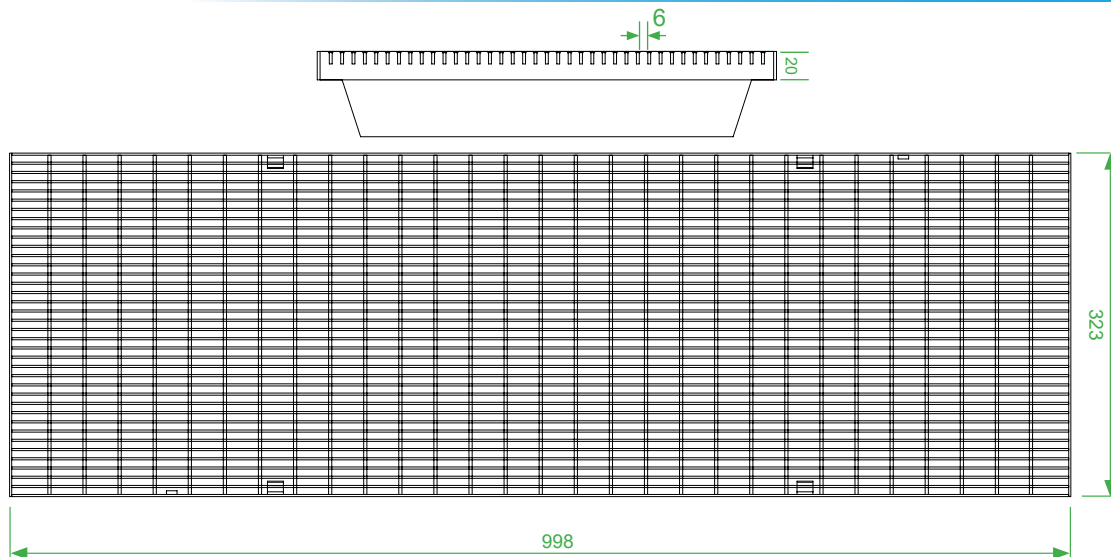
### Galvanised Steel Heelguard Grate

Certified to AS3996 load class D240kN, point load approximately 8,000kg.  
Compliant for wheelchair & walking cane safety (AS1428.2 - Clause 9).  
Compliant for bicycle tyre penetration resistance (AS3996 - Clause 3.3.6).  
Compliant for surface openings in pedestrian areas (AS3996).  
Certified for slip resistance Wet Pendulum Test (AS4586:P4).

Intake area of 203,674mm<sup>2</sup> per metre.  
Manufactured from galvanised mild steel.  
Grates suitable for MEA Supreme LZ/LS/AZ/AS3000 & Mearin Plus 300 channel units & inline sumps.  
Total width of grate 323mm.

### Locking Mechanism

CLIPFIX locking system offers securement to channel units & inline sumps.



PRODUCT SPECIFICATION				
DESCRIPTION	MATERIAL	LENGTH	PART NO.	WEIGHT (kg)
323mm Galvanised Steel Heelguard Grate - Class D CLIPFIX	Mild Steel	998mm	160560HG	14.0